



Data and Networking Overview

Delivering superior, integrated multi-vendor, multi-location solutions, customized to the current and anticipated needs of individual clients

The ability to access critical business functions relies upon having your systems and infrastructure connected and available at all times. With the advent of cloud based services co-existing with centralized enterprise architectures, the SolEx Data and Networking portfolio is designed to provide business customers with a range of fast, reliable, primary and backup Local and Wide Area connectivity to suit all needs and budgets. With private line connectivity and "over-the-air" solutions which range from fixed wireless through 4G/5G to satellite, coupled with our Software-Defined, Wide Area Networking (SD-WAN) solutions, we can harmoniously integrate and augment your existing connections to deliver superior secure, self managing, uninterrupted access to critical network and cloud-based resources for all your office based, hybrid and remote employees.

Internet Access

Internet Access has become the de-facto backbone of many modern networks. Gone are the days when more expensive circuits such as MPLS or IP-Sec were the only way to create a fully meshed networking topology delivering private reliable, "multi-route", any-to-any connectivity while simultaneously handling real-time voice, video and internal traffic. Today, internet, coupled with the inherent benefits brought about by the advent of Software Defined Wide Area Networking (SD-WAN), allow business to achieve far more from less expensive circuits. At SolEx, while we still offer MPLS for specific Virtual Private Networking (VPN) applications, our Internet service comprises of the following two categories:

- **Dedicated Internet** - Internet service where a provider dedicates a specific amount of bandwidth for that connection. This bandwidth is not shared with anyone other than the users of that physical circuit. As such dedicated connection performance and reliability is very high and is the appropriate choice where consistent bandwidth availability is critical.

SolEx offers Dedicated Internet nationwide, at synchronous speeds from 1 Mbps to 1 Tbps depending on location.

- **Broadband Internet** – Internet service where connection is a shared network, with many different users in an area sharing a common larger connection. Unlike Dedicated Internet service, the amount of bandwidth offered is only up to the maximum available or package speed. Actual speed is determined by the Internet Service Providers (ISP's) network traffic and congestion, which can vary greatly depending on the location or time of day. Therefore bandwidth speed tends to be unpredictable and performance varies which can cause issues with applications being used. However with the advent and inclusion of (SD-WAN) and the addition of backup circuits, a lot of the congestion and reliability problems can be alleviated. As a consequence Broadband Internet is frequently the option adopted as a cost effective solution by many businesses especially when deployed in conjunction with SD-WAN.

SolEx offers Broadband Internet nationwide at both synchronous and asynchronous speeds from 1 Mbps to 5 Gbps depending on location, and full SD-WAN services.

Software Defined Wide Area Networking (SD-WAN)

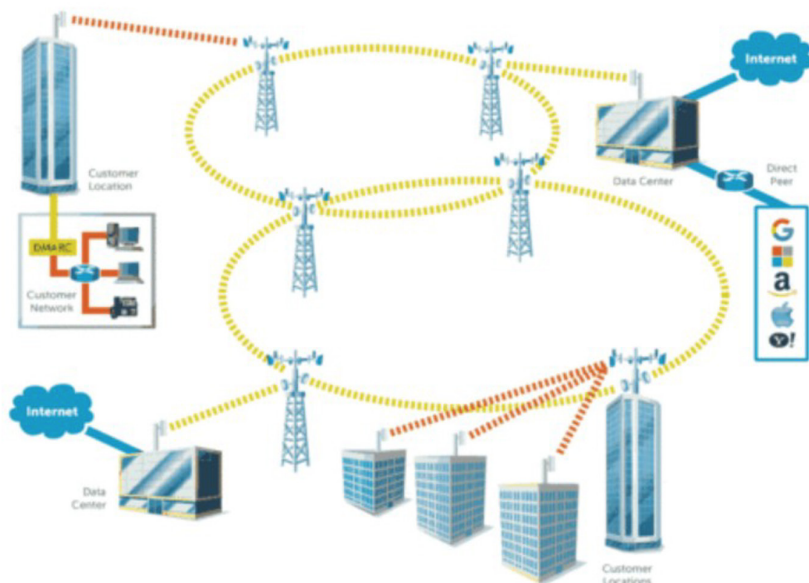
Software-Defined WAN (SD-WAN) enables enterprises to increase their bandwidth efficiency and improve flexibility while significantly improving security and decreasing the cost of their legacy WAN. Delivered through an application driven software-defined overlay solution, WAN deployment can be automated to the point of zero-touch provisioning thereby resulting in significant savings over traditional methods. With extensive management functions, including the ability to create secure tunnels between locations regardless of underlying transport and optimized traffic steering for cloud and SaaS based applications, SD-WAN offers advanced routing and end to end encryption coupled with an extensive suite of security functions, including next-generation firewall, secure web gateway, deep packet inspection, content filtering and extensive network analytics. **SolEx's SD-WAN** significantly simplifies the deployment and management of Wide Area Networks while providing increased levels of security from unauthorized access, manipulation, and compromise.



Fixed Wireless

Fixed Wireless Access (FWA), frequently referred to as Ethernet over Fixed Wireless (EoFW) is an accomplished method of business connectivity that can provide your company's location with broadband internet access without the use of phone or cable lines. Fixed wireless is a microwave-based line-of-sight technology which relies on microwave signals to permit transmission and reception of high-speed data between two fixed locations. Unlike mobile technology where bandwidth is shared on a "one to many" basis, or satellite where latency and the effect of inclement weather can affect performance, fixed wireless provides low latency resilient connections, allowing industry leading service level agreement (SLA) to be delivered.

SolEx offers Fixed Wireless Access at speeds ranging from 1.5 Mbps to 1 Gbps in qualifying locations.



Satellite

Satellite Internet involves transmitting and receiving data from either a Geostationary satellite (GEO Satellite) high above the earth's equator or a Low Earth Orbit satellite (LEO Satellite) operating at a much lower altitude and configured as a mesh to cover the globe. Satellite Internet is therefore an option for businesses located in remote locations, such as farms, deserts, and mountainous areas, or businesses which are vastly mobile such as maritime, aviation, offshore energy, or defense.

Although traditional GEO satellite communication is not as fast as other internet mediums, LEO satellite speeds are becoming comparable and can currently typically reach speeds up to 350 mbps . While weather conditions can affect satellite performance and latency, LEO satellite, with over 6000 satellites currently in operation and lower latency characteristic and higher throughput than its predecessor, has become a consistent and reliable primary or backup connectivity method worthy of consideration.

Ethernet Private Line (EPL)

Ethernet Private Lines (EPL) deliver high-performance, secure connections between two sites with a high degree of transparency. Ideal for mission-critical, sensitive data applications, EPL allows users to bypass the public Internet and securely transmit traffic over a private connection. Backed by a Service Level Agreement (SLA) and perfect for latency intolerant applications like data center integration, EPL enables customers to maximize application performance by assigning a higher transmission priority to the most important work flows and applications via its Class of Service functionality. Inherently secure, with no data encryption needed, EPL is a method of easily linking business locations in geographically dispersed area on a Point-to-Point basis. **SolEx offers nationwide EPL services** to its customers and for those businesses who require both Point-to-Point and Point-to-Multi-point configurations we offer **Ethernet Virtual Private Line (EVPL)**.

4G/5G Wireless

4G/5G cellular wireless can provide primary or backup internet connections to specific offices or be deployed as a solution for mobile applications. Operating in many way similar to fixed wireless, but utilizing 4G or 5G technology with cell density of 5G significantly surpassing that of its predecessor, **5G's ultra-low latency and high cell density offerings which are offered through SolEx on a nationwide basis**, allow business to prepare and efficiently deploy solutions incorporating mobile Internet of Things (IoT) or Artificial Intelligence (AI).

Custom is key

Each customers needs are as unique as their business plans. At SolEx we have specialized engineering resources responsible for recommending the best solutions for your company.

Our dedicated team of Sales Engineers will work with you to utilize your current network before expanding to other options. Our deployments can run from a simple Direct Internet Access (DIA) installation, all the way up to creating a hybrid cloud that ensures that your network never hits the "public" internet. **SolEx can design solutions to optimize our services alongside critical business operations in the following industry sectors**

- Retail
- Government
- Finance
- Education
- Healthcare
- Hospitality

Channel Partners

With sterling quality customer service, client centered solutions and a US based network operations team, SolEx has been providing our channel partners with a route to accelerated revenue growth since 1999. To learn more about becoming an accredited SolEx channel partner and all the advantages we offer, please contact us at Partner@solexp.com

Why SolEx

For over 30 years, SolEx has been providing top-tier forward-thinking solutions to enterprise clients via its 100% partner-based distribution channel. With a portfolio consisting of Voice & Collaboration, Data & Networking, and Security & SASE product lines, which spans simple POTS Replacement to Low Earth Orbit Satellite and SASE, SolEx excels in delivering boutique complex out-of-the-box multi-location, multi-vendor meshed solutions that others find difficult to achieve. Use us when your needs are complex, and you need stellar reliability. As an award-winning customer focused technology-centric private enterprise serving some of the biggest and most prestigious companies in the USA and around the globe, we turn aspirations into positive tangible business outcomes.



VSA CHANNEL PROGRAM OF THE YEAR 2023_2024



VSA MULTI LOCATION DEPLOYMENTS OF THE YEAR 2024



VSA MOST RESPONSIVE SUPPLIER CHANNEL TEAM OF THE YEAR 2023_2024

Voice & Collaboration

Data & Networking

Security & SASE

800-411-3611
Partner@solexp.com